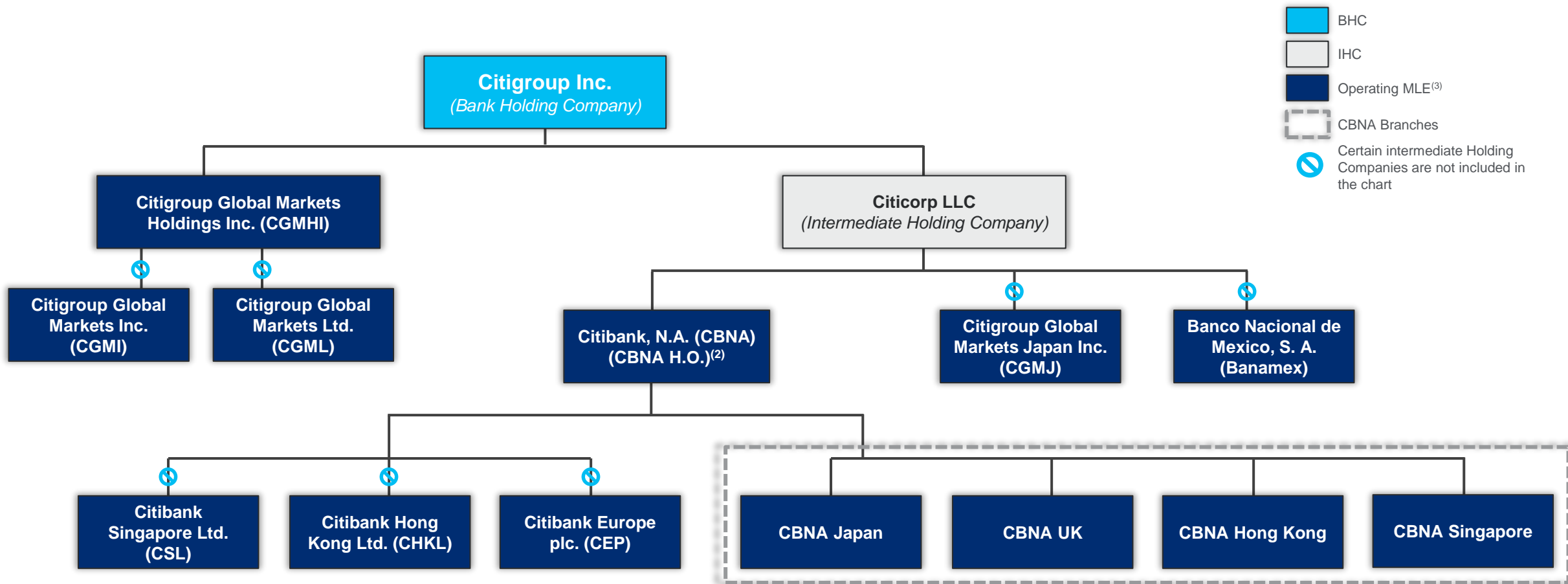


Citigroup Material Legal Entities⁽¹⁾

As of May 16, 2024



- (1) Service MLEs are excluded from this illustration.
- (2) The U.S.-based operations of Citibank, N.A. are referenced as 'Citibank, N.A. Home Office' in Citigroup's 2023 Resolution Plan.
- (3) Represents material legal entities (MLEs) as defined by the 165(d) Rule under the Dodd-Frank Act, which specifies that an MLE is an entity, including a subsidiary or foreign office, that is significant to the activities of a core business line (CBL) or critical operation (CO). Material legal entities reported under the Dodd-Frank Act may differ from the significant legal entity subsidiaries as reported in Citi's SEC filings.